

RACE CAR PHOTO RIDE

CEC Version



**Be Sure
to Read this
Manual
Before Use**



Operation Manual

Distributed by: Amusements Worldwide

www.amusementsworldwide.com

Tel: 214-750-9202

SERIAL NUMBER:

DATE OF INSTALLATION:

CONTENT

Important Safety Instructions	2
1. SPECIFICATIONS	4
2. PACKAGE CONTENTS	5
3. PART NAMES	6
4. SET UP & INSTALLATION	7
5. HOW TO PLAY	11
6. GAME OPTION	12
7. MAINTENANCE, INSPECTION	18
8. OVERALL CONSTRUCTION	19



WARNING

Non-technical personnel who do not have technical knowledge and Expertise should refrain from performing such work that this manual require or perform tasks which are not explained in this manual. Failing to comply can cause severe accidents such as electric shock or other serious injuries. All repairs must be performed to original manufacturer specifications.

WARNING: To reduce the risk of fire, electric shock or personal injury, unplug or disconnect the machine from the power supply before servicing.

Thank you for purchasing **RACE CAR PHOTO RIDE**. We hope you enjoy the product.

This manual contains valuable information about how to operate and maintain your game machine properly and safely. It is intended for the owner and/or personnel in charge of product operation. Carefully read and understand the instructions.

If you need any help during installation and setup please utilize this manual and troubleshooting guide. If the product fails to function properly, *non-technical personnel should under no circumstance attempt to service the machine*. Contact your distributor or manufacturer for help.

Before use, please read **IMPORTANT SAFETY INSTRUCTIONS**.

IMPORTANT SAFETY INSTRUCTIONS

To ensure the safe usage of this product, carefully read and understand these instructions before operating your game. Save these instructions for future reference.

Use this product only as described in this manual. Other uses not recommended may cause fire, electric shock or personal injury. Unplug the game from the outlet when not in use, when moving from one location to another, and before cleaning/servicing.

Explanations which require special attention are indicated by signs of warning. Depending on the potential hazardous degree, the terms: **NOTE**, **NOTICE**, and **WARNING** are used.

NOTE: A NOTE indicates useful hints or information about product usage.

NOTICE: A NOTICE indicates potential damage to product and how to avoid the problem.

WARNING: A WARNING indicates a potential for product damage or serious personal Injury.

It is important to understand the meaning of the following HAZARD SIGNS before continuing:

High Voltage and Shock Hazard:

High voltage can cause electric shock.
Turn off/unplug power before servicing.



High Temperature Hazard:

This part may cause scalding.
Do not touch. Surface may be hot.



No Touching Hazard:

This part may be hot or can cause electric shock.

Do not touch.



Use the following safety guidelines to help ensure your own personal safety and to help protect your equipment and surrounding environment from potential damage.

 **This product is an indoor game machine. Do not install outdoors.**

Avoid installing in the following places to prevent fire, electric shock, injury and/or machine malfunctioning:

- Places subject to rain/moisture, or places subject to high humidity.
- Places subject to direct sunlight, or places subject to extremely hot or cold temperatures to ensure that it is used within the specified operating range.
- Places where inflammable gas may be present or in the vicinity of highly inflammable/volatile chemicals or items that can easily catch fire
- On unstable or sloped surfaces. The machine may topple or cause unforeseen accidents.
- Vicinity of fire exits, fire extinguishers etc that may block/prevent safety measures

IMPORTANT NOTE:


All repairs must be done to original manufacturer specifications. Failure to do so will void all warranties and operator assumes all risks.

Note: The contents of this manual may be updated without notice

1. SPECIFICATIONS

Rated power supply:	110V, 50/60Hz
Min. Power consumption:	418W
Max. Power consumption:	600W
Dimensions:	D83.85 x W35.43 x H53.15 (inches)
Weight:	Approximately 551 (lbs)




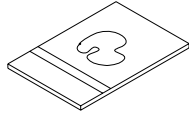
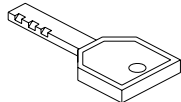
 **NOTICE:** After turning off the game, please wait at least 1 minute before restarting again.

Note: Game parameters are subject to change without notice.

2. PACKAGE CONTENTS

Open the package and make sure all the items are included:

- 1 x Body Assembly
- Following accessories

No.	Part No.	Name	Spec.	Qty.	Illustration	Note
1	R106-432-000	Bulb	12V 3W	4		
2	R106-440-000	Fuse	Φ6×30 T15A/250VAC(Fuse wavy)	1		Choose by area
3	R106-725-000	Manual	English	1		Choose by area
4	R106-451-000	Key	C582	2		Service door
5	R106-452-000		2233	2		Coin box door
6	R106-453-000	L Hexagon spanner	CR-V2.5mm	1		

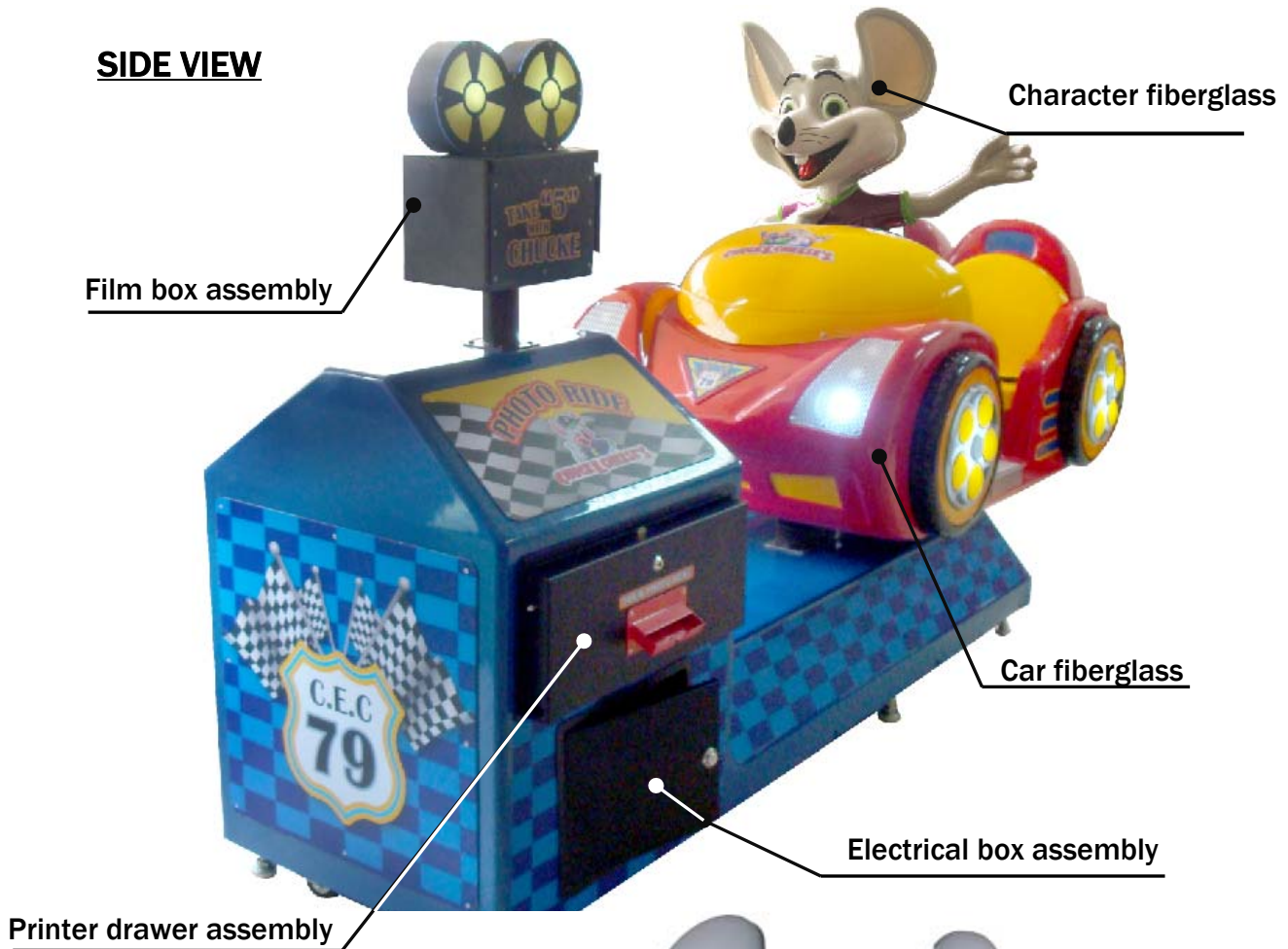
If any items are found to be missing, please contact your sales representative for help immediately.

Warranty: Universal Space provides 90 days warranty for all electrical and mechanical components, when used under normal operating conditions. Any modification or abuse of these items immediately voids the warranty. Graphic and consumable items are exempt from any warranty.

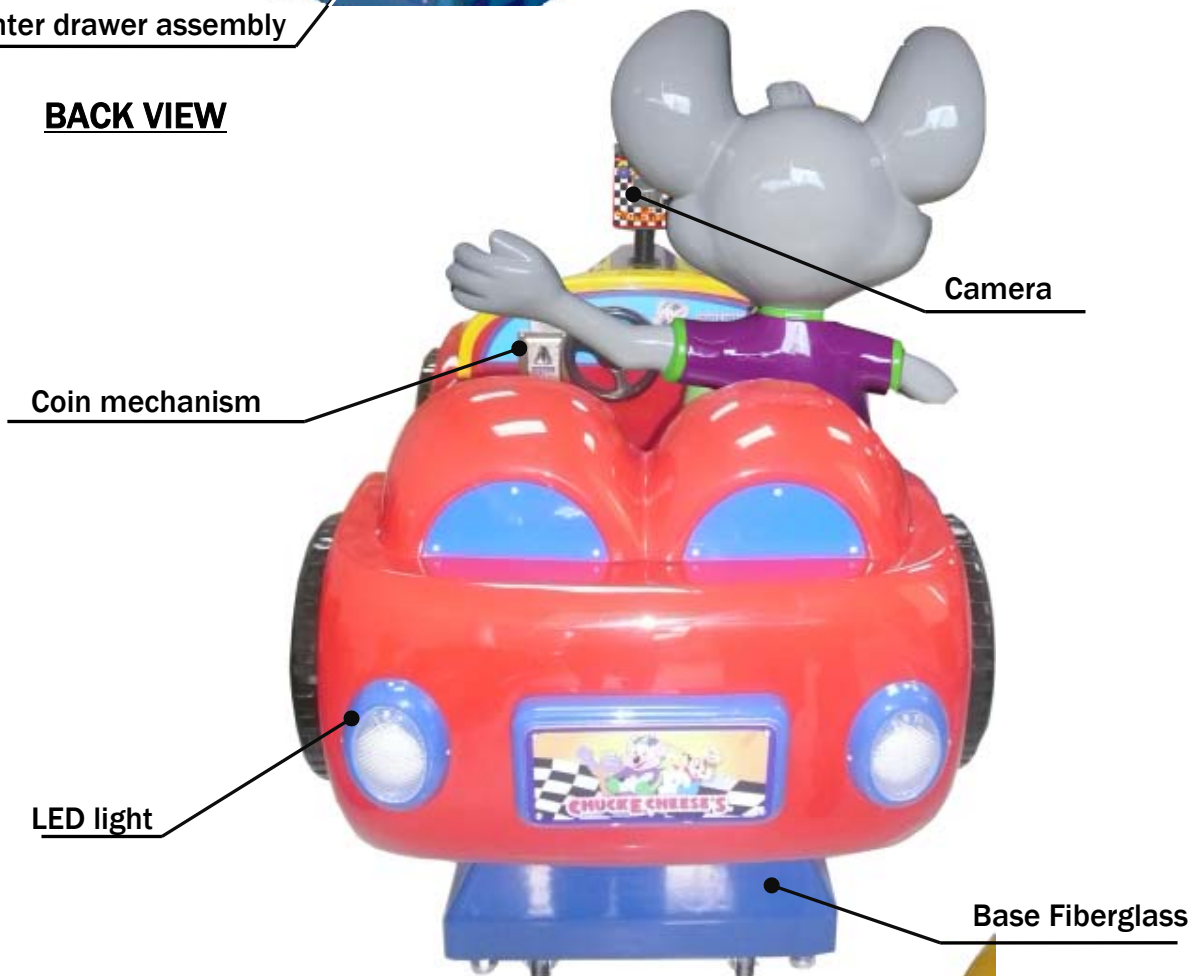
NOTE: Part models are subject to change without notice.

3. PART NAMES

SIDE VIEW



BACK VIEW



4. SET UP & INSTALLATION

! This product is an indoor game machine. Do not install outdoors.

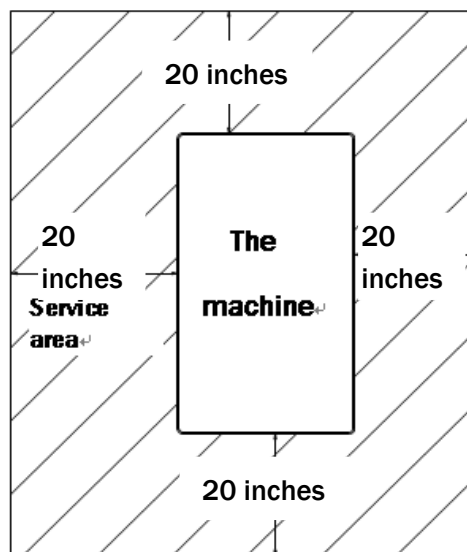
- Refer to IMPORTANT SAFETY INSTRUCTIONS (Pg. 3) for places to avoid
- Place the unit on a dry level surface
- Ventilation openings in the back of the unit must not be obstructed by objects or by wall.

4.1 Play Zone

This machine requires space for playing and for maintenance as shown below.

Leave space around the game upon installation:

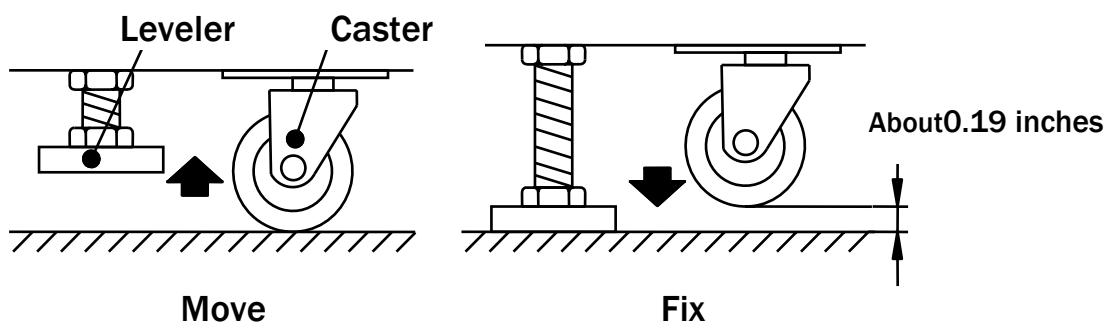
Service area: 20 inches



4.2 Level Adjustment

Install this machine on a flat surface. Adjust levers to lift casters off the ground to level the game. If the game is installed on an unsuitable floor, it could cause a malfunction.

To fix the game, adjust the Leveler down until it touches the floor, lifting the casters off the ground by 5mm. Repeat the same for all levelers.

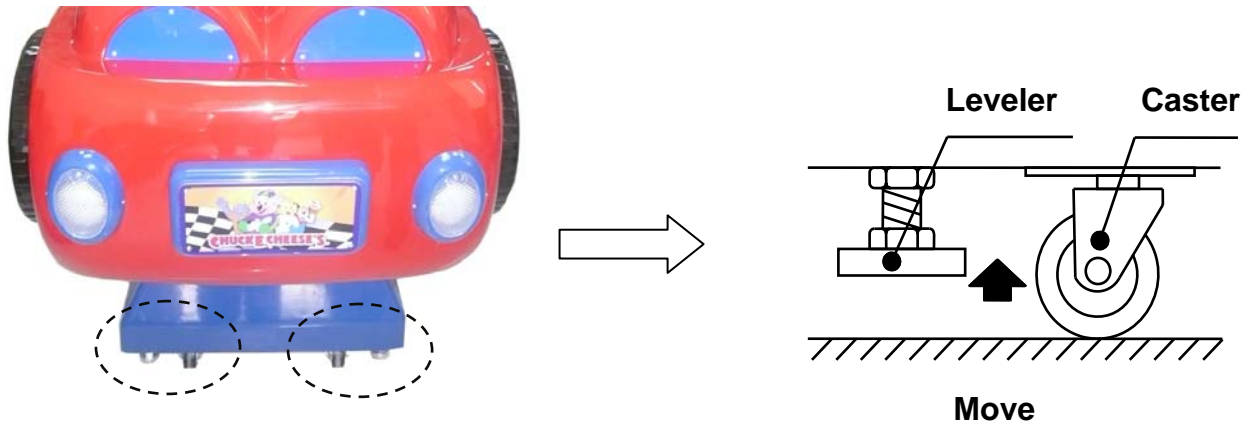


NOTICE

Make sure the machine is level with the ground and all the adjustable legs should stick to the floor closely.

4.3 Transporting the Game

If you need to move the game, adjust the levelers back to an “up” position so the casters touch the ground.



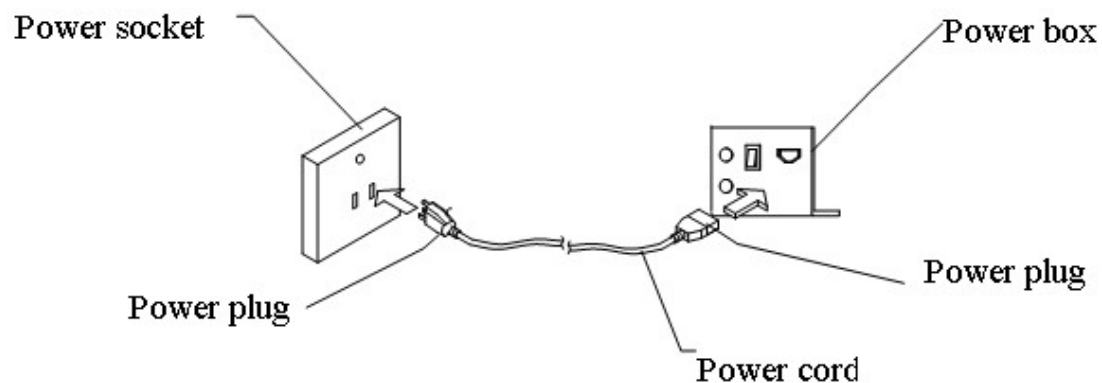
NOTICE

- Be careful not to damage the machine during transport.
- The machine should be handled with care when bringing it down from a higher level.
- Always unplug the game before moving.
- Keep the machine in upright position during transport.
- For longer distance transport, package the game properly to prevent damages.

4.4 Connecting Power

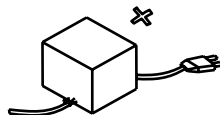
! WARNING: Check the voltage rating before you connect the equipment to an electrical outlet to ensure that the required voltage and frequency match the available power source. Please refer the label of the machine.

- Do not plug the equipment power cables into an electrical outlet if the power cable is damaged.
- Avoid putting many loads on one electrical outlet as it could generate heat and fire resulting from overload.
- Connect the grounding conductor to the earth terminal (GND):

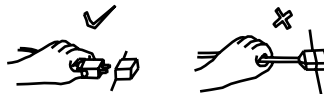


! WARNING

Ensure no heavy objects rest on the power cord. Check to make sure the game cabinet does not sit on the power cord as this could damage the cord and become hazardous.



To disconnect the game, grip the plug and pull it from the wall outlet. Never pull by the cord.



To prevent electric shock, do not touch the power plug when hand is wet.



Ensure that nothing rests on the power cord and that it is not located where it can be stepped on or tripped over.



4.5 How to install the printer



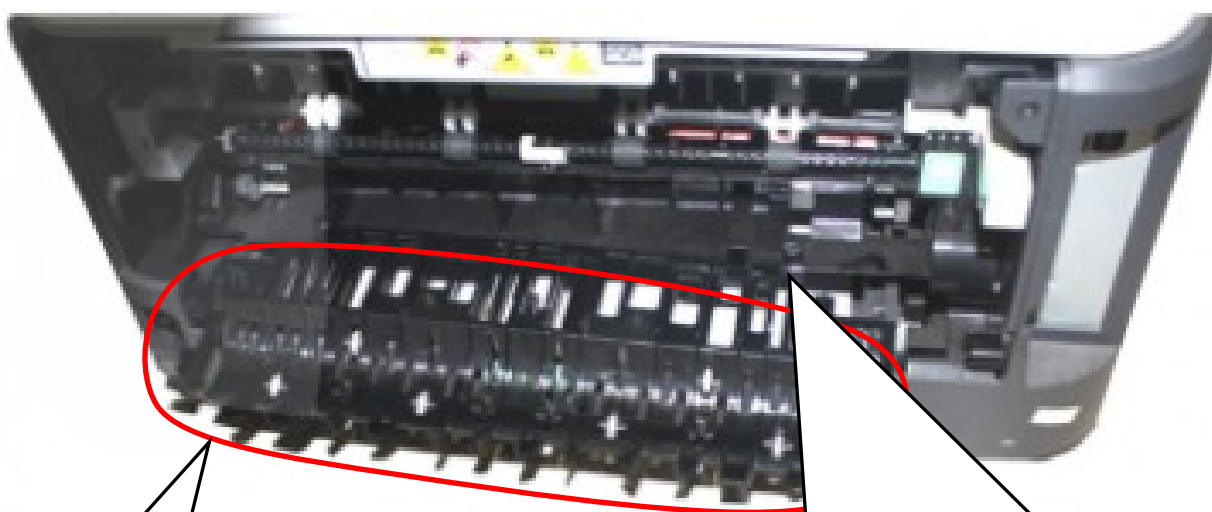
1. Open the back panel.



3. Pull the hook out from each side and take the back panel out



2. Pull the hook

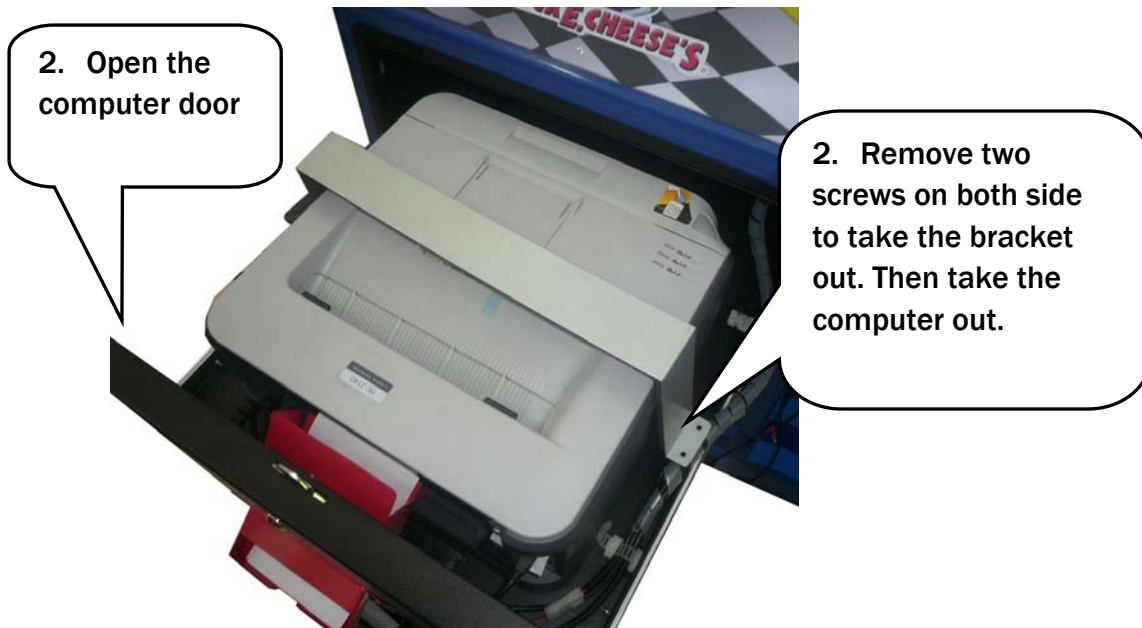


5. Take this inner back panel out. And then install the printer to the machine.



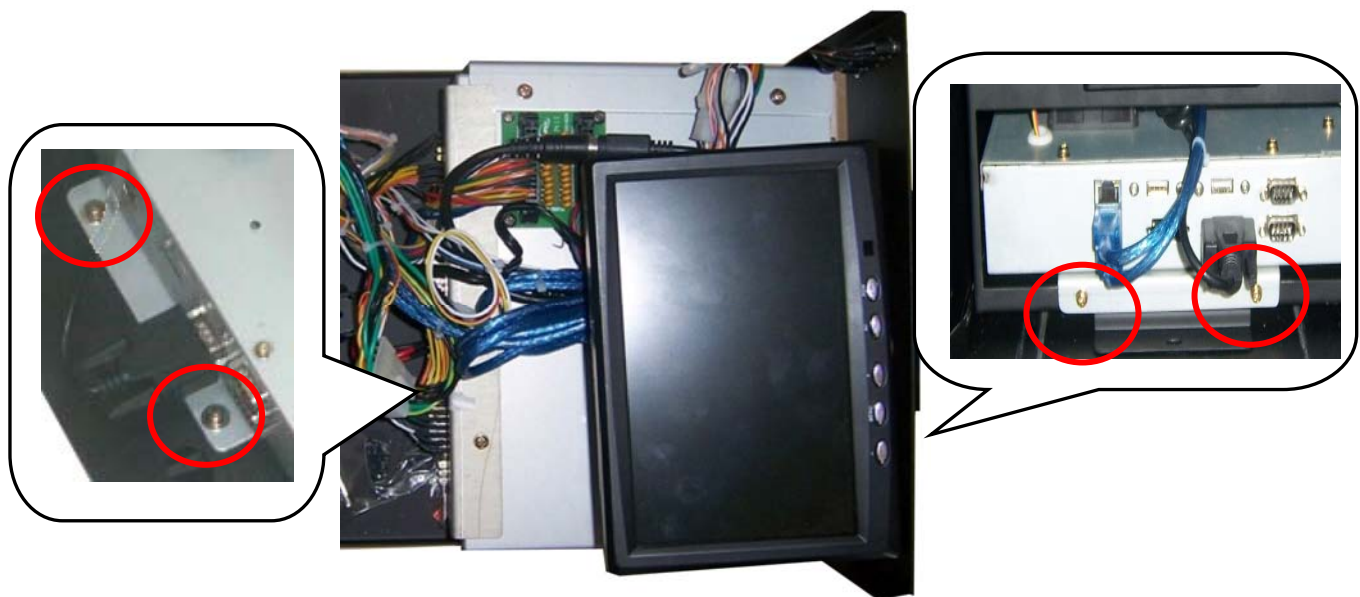
4. Pull the hook out of the inner plate on both sides.

4.6 How to take the printer out



4.7 How to take the computer out

Take 4 mounted screws out to remove the computer box.



5. HOW TO PLAY

- Fasten the seat belt. Insert coin(s).
- The ride will start automatically.
- During the riding, look at the camera and it will take a shot.
- Take your photo from the side opening after the game is over.

6. GAME OPTIONS

6.1 Get into the Setting Menu and Button Function Description

Open the Electrical side door in order to access to the setting monitor. Press any button to display the content shown on the screen.



Service Button: Get into the setting menu.

Volume+ Button: Change the value and confirm.

Volume- Button: Change the value and confirm.

Printer reset Button: Go to the next item.

Service	●
Volume +	●
Volume -	●
Printer Reset	●

6.2 Setting Menu

Press the Service button on the electrical box to display the following Setting Menu.

Main Menu	
	Game Mode
	Input Test
	Output test
	Game Reset
	Language 语言
	Date/Time Setting
	Bookkeeping
	Daily Record
	Adjust Camera
	Exit & Without Save
	Exit & Save
Race Car Photo Ride	
2011 Ver2.2	

6.2.1 Game Mode

Free Play:	OFF
Printer:	ON
Demo Music:	OFF
Save Coins:	ON
Volume:	10
Coins Per Round:	1
Each Round Time:	45
Paper format:	One Shot
Ride with printer error:	ON
Back	

Free Play: OFF- -Play by credits; ON- -Play for free. Default setting: OFF.

Printer: OFF- -Photo printing function is available; ON- -Photo printing function is not available. Default setting: ON.

Demo Music: OFF- -No demo music during demo mode; ON- - Play demo music during demo mode. Default setting: OFF

Save Coins: OFF- -Clear credit memory when power is off; ON- - Keep credit memory when power is off. Default setting: ON

Volume: Volume adjustment. The range is 0~10. Default setting: 10.

Coins Per Round: Set the number of required credits per game. The range is 1~20. Default setting: 1.

Each Round Time: Set the time of each game. The range is 1~300 seconds. Default setting: 45 seconds. Suggest setting the time no less than the default. Make sure there is enough time to print the photo out during playing.

Paper format: One Shot- -1 shot shown in a photo; Four Shot- - 4 shots shown in a photo. Default setting: One Shot.

Ride with printer error: OFF- - Stop playing when printer error is detected. Keep playing when printer error is detected. Default setting: ON.

Back: Back to the Main menu.

6.2.2 Input Test

Input Test, Press Service Button to exit	
Coin1	OFF
Music Button1	OFF
Music Button2	OFF
Music Button3	OFF
Music Button4	OFF
Music Button5	OFF
Volume +	OFF
Volume -	OFF
Test Button	OFF
Repair Button	OFF

Press each button one time to check its function whether in good condition. If OFF turn to ON when pressing one of the button, it means the button signal is good.

6.2.3 Output Test

Output Test

Front Wheel Light_L 1
Front Wheel Light_L 2
Front Light_L
Head Light_L
Front Wheel Light_R 1
Front Wheel Light_R 2
Front Light_R
Head Light_R
Back Wheel Light_L 1
Back Wheel Light_L 2
Back Wheel Light_R 1
Back Wheel Light_R 2
Tail Light_L
Tail Light_R
Back

Press the Printer Reset button to select any item to be tested. Then press Volume button to confirm. When the corresponding light is on, it means the status is good.

6.2.4 Game Reset

Game Reset

Reset Game Setting
Delete All Record
Back

Reset Game Setting: Reset all parameter to the default.

Delete All Record: Delete all data record.

Back: Back to the Main Menu.

6.2.5 Language

English

简体中文

Select the language that the game used. There are Chinese and English can be selected.

6.2.6 Date/Time Setting

Year:	2011
Month:	5
Day:	24
Hour (24):	9
Minute:	11
Second:	52
Save & Back	
Back	

Set the date and time of the game.

Save & Back: The changes will be saved and back to the Main Menu.

Back: Back to the Main Menu without saving.

6.2.7 Date/Time Setting

Player	Coins
1	0
Sum	0
Reset	
Back	

Player 1 /Coins: Record the coin amount from one coin mech.

Sum/Coins: Record the total coin amount from more than one coin mech.

Reset: Clear the record.

Back: Back to the Main Menu.

6.2.8 Daily Record

Date	Weekday	Run Time	Coins
2011-05-24	TUE	00:10	0
Reset			
Back			P1/1

Record the daily run time and credits amounts.

Reset: Clear the existing record.

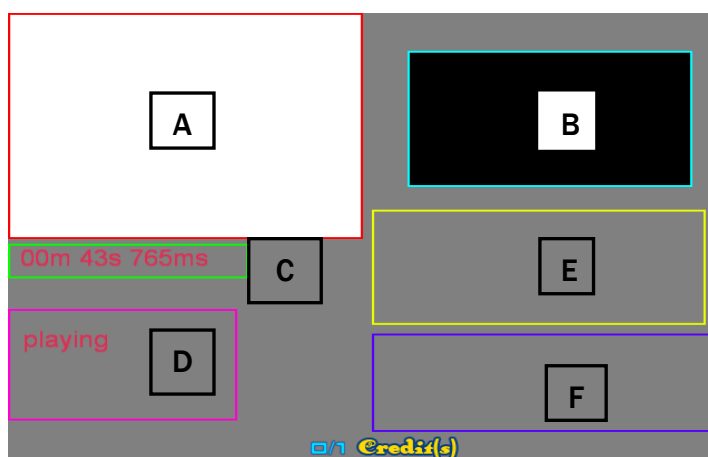
Back: Back to the Main Menu.

6.2.9 Adjust Camera

Press Service Button to Exit

Camera screen viewport is open in order to adjust the camera. Press Service button and back to the main menu.

6.3 Screen Display & Error Message Explanation



Printer operation information is shown on the screen. It is divided into 6 areas from A to F shown as above.

A: Display what the camera is viewing during play. It shows “Demo” during Demo Mode.

B: Preview the picture which is going to print out.

C: Display the remaining time of the existing game.

D: Display the status. “Playing” means in play mode. “Not play” means in Demo Mode.

E&F: Display error message.

6.3.1 Error Message

No	Error Message	Cause	Countermeasures
1	Can't set video format to YUY2 320x240!! Usb Camera Error, Please check camera usb connect!!	Camera is malfunctioning.	Please check to ensure that the camera connection is good and then press the Printer Reset button or restart the game.
2	Printer Error	Printer is malfunctioning.	Please check #3~#7 countermeasure.
3	Printer Off Line, Please Check Printer usb connect and power, Then restart!!	Printer is off line.	Please check the printer connection and power and then press Printer Reset button.
4	Printer no paper, Please put new paper and press GO button!!	Out of paper.	Refill paper then hold and press Go button on the printer. If any error happens, please restart the game and check what other error message will display.
5	Printer toner life end, and exchange a new toner, Press Reset button!!	Out of cartridge	Replace a new one. It will reset automatically. If any other error happens, please restart the game and check what error message will display.
6	Printer Front Door is no close, Please Check!!	Printer door is open.	Close the printer door.
7	Printer status can't find, Restart to check!!	Error cause can't be found.	Reconnect the printer and restart the game. If error is still happen, please contact program supplier.

6.4 Recovery Instruction

1. Turn off the game. Open the computer service door.



2. Insert the USB into the USB interface.



3. Turn on the game. It will get into the system recovery process automatically (below picture will be shown). The recovery process will take about 5 minutes.



4. When system recovery is completed, the below picture will be shown. Then please remove the USB. The computer will restart automatically.



7. MAINTENANCE, INSPECTION

7.1 Safety Check

Check the points listed before operating the machine. These checks are necessary for safe machine operation:

1. Try to run the game before operation each day.
2. Conduct monthly routine checks of game components ensure good working condition
3. Check the machine regularly for dust and clean when necessary.

Note: Parts and components require preventative maintenance to be kept running smoothly

7.2 Handling Precautions

When installing or inspecting the machine, be very careful of the following points and pay attention to ensure that the player can enjoy the game safely.

Non-compliance with the following points or inappropriate handling running counter to the cautionary matters herein stated can cause personal injury or damage to the machine

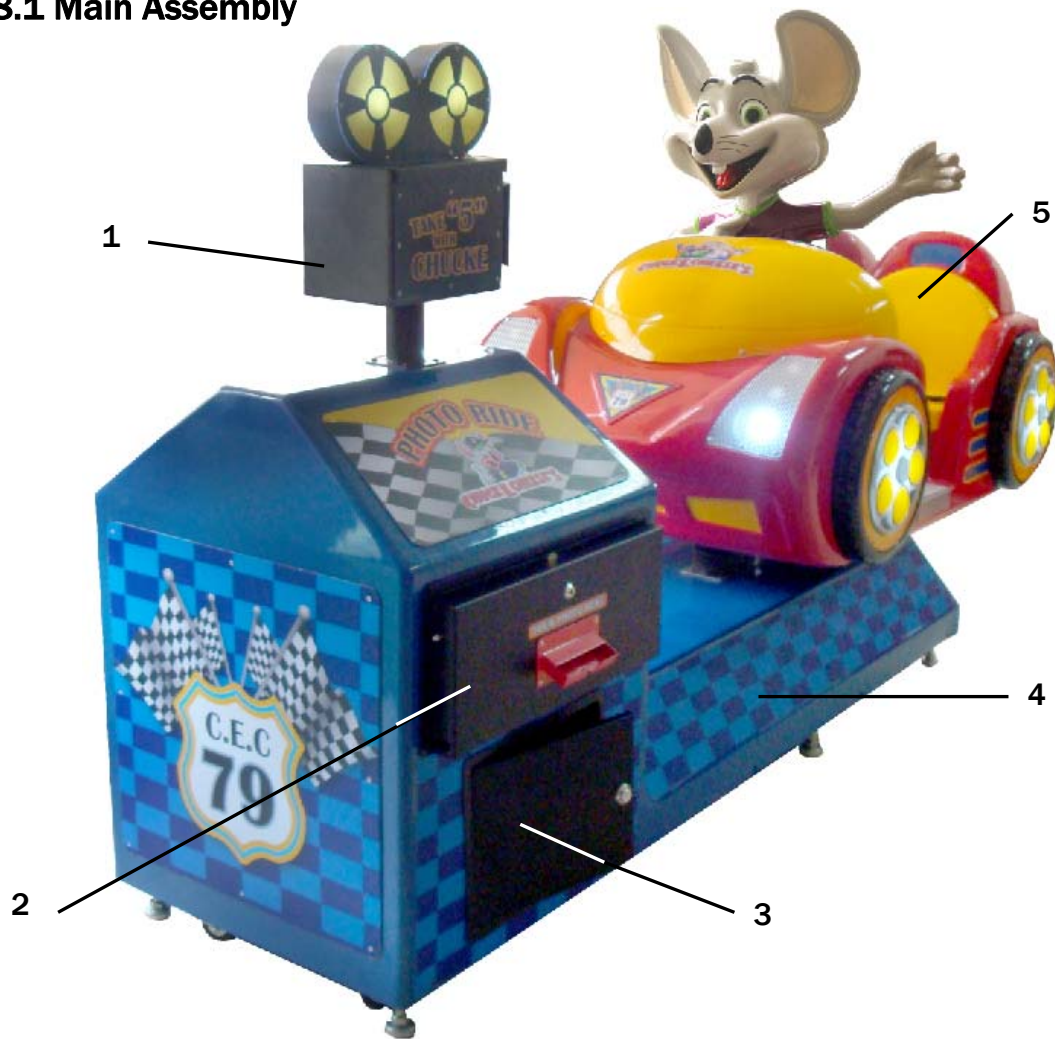


WARNING

- Before servicing the machine, be sure to turn power off. Servicing without turning the power off can cause electric shock or short circuit.
- To avoid electric shock or short circuit, do not plug then unplug the power quickly
- Do not expose power cords and earth wires, these are susceptible to damage.
- Damaged cords and wires can cause electric shock or short circuit and should be replaced immediately.
- When or after installing the product, avoid pulling the power cord to prevent unnecessary wear and tear. Use the power button to disconnect power.
- In case the power cord is damaged, ask for replacement through where the product was purchased from or replace locally. Continued usage of damaged cord can cause fire, electric shock or leakage.
- Perform grounding appropriately. Inappropriate grounding can cause electric shock.
- Use fuses that meet specified rating. Fuses exceeding can cause an electric shock.
- Should a problem occur, turn off the power immediately and stop operating the machine. Unplug the power cord of the service outlet. Operating the machine without correcting the problem may cause a fire or injuries.
- Insert the power plug securely into the outlet. Poor contact may cause overheating, resulting in fire or burns.
- To ensure the warning labels attached on the machine are visible and legible, install the machine in a well-lit location, and keep the labels clean at all times. Make sure the labels are not hidden behind other game machines.

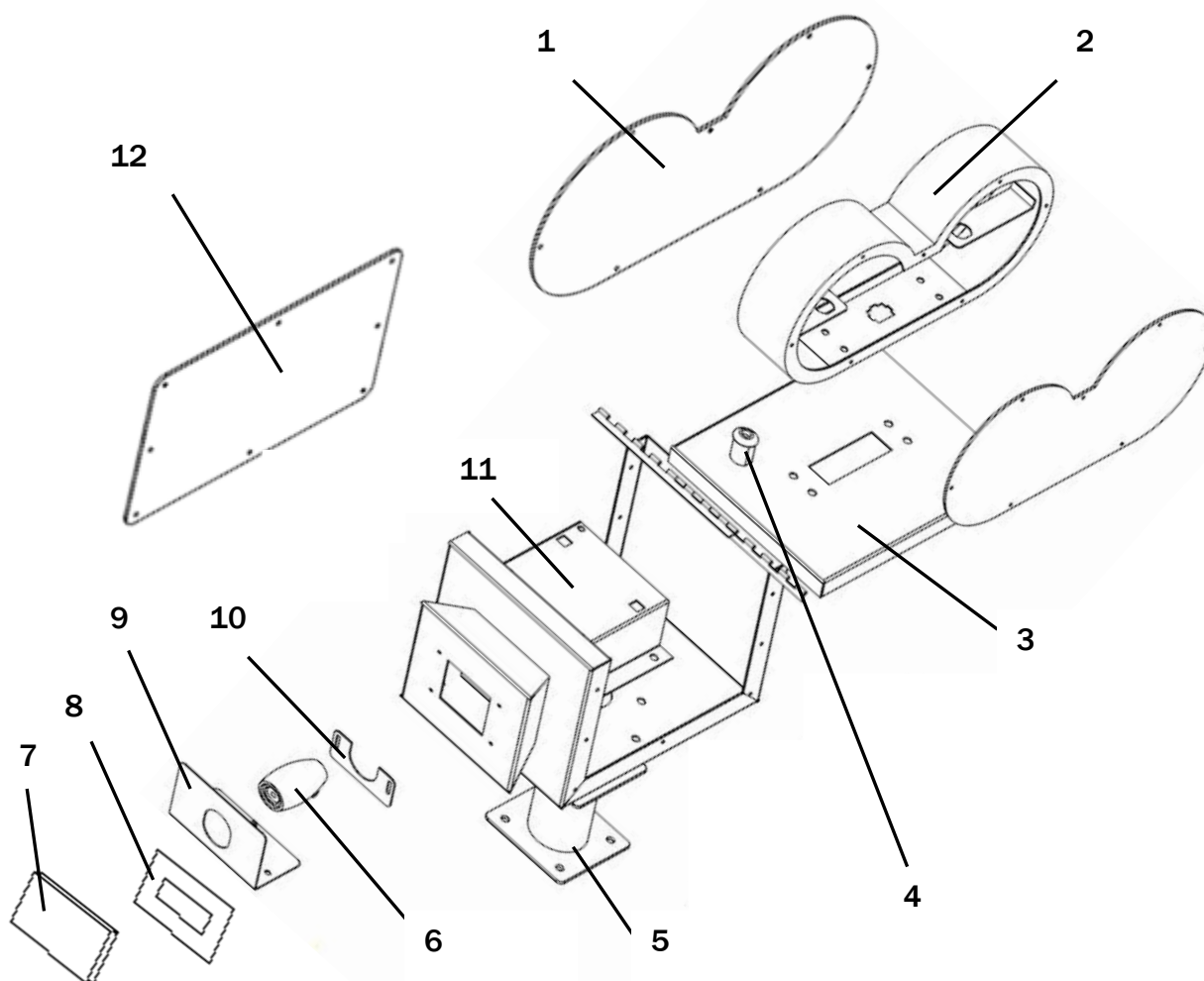
8. OVERALL CONSTRUCTION

8.1 Main Assembly



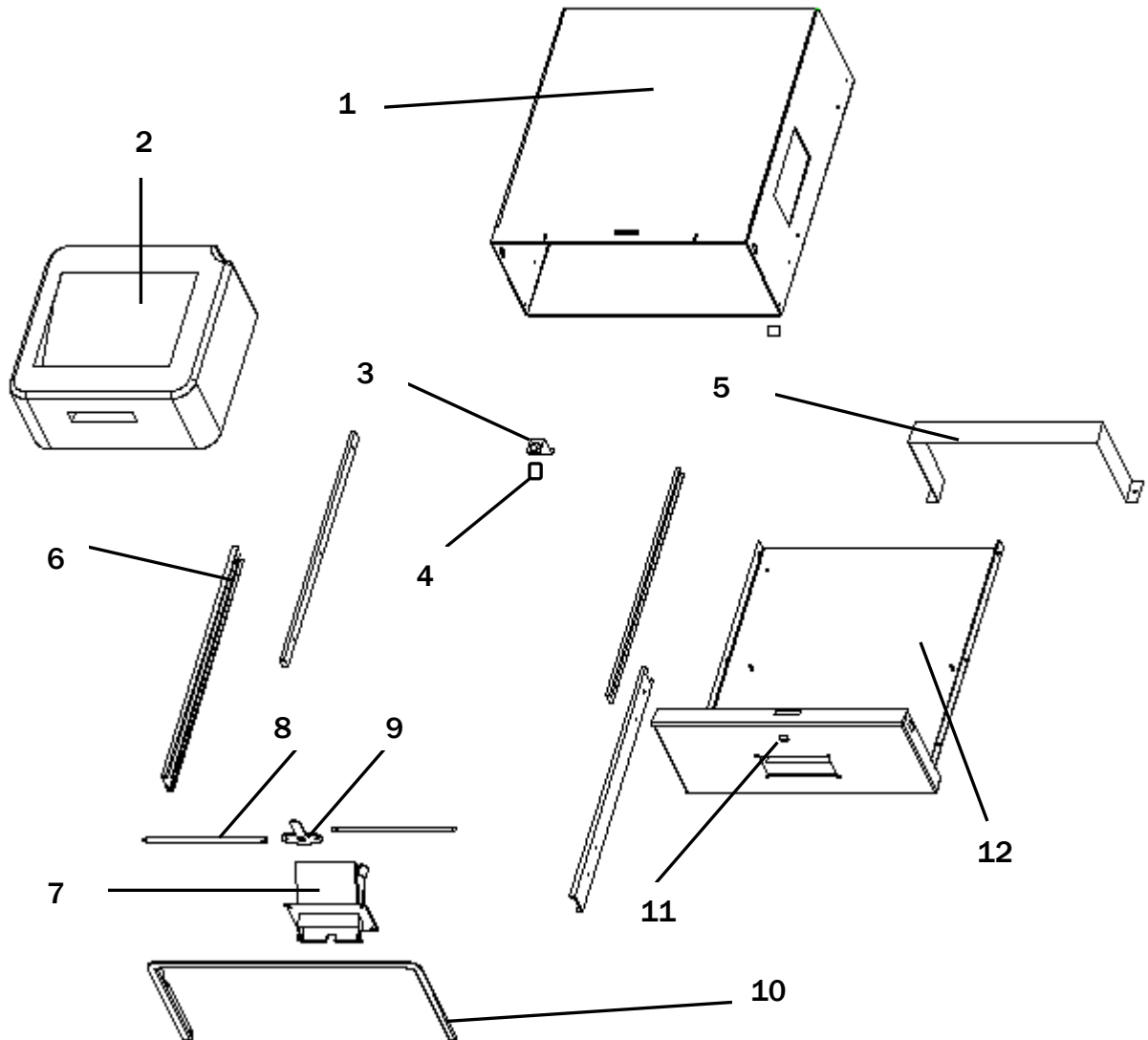
No.	Part No.	Name	Qty.
1	R-106-001-000	Film mechanism assembly	1
2	R-106-002-000	Printer drawer assembly	1
3	R-106-003-000	Computer box assembly	1
4	R-106-004-000	Fiberglass base assembly	1
5	R-106-005-000	Fiberglass car assembly	1

8.2 Film Mechanism Assembly



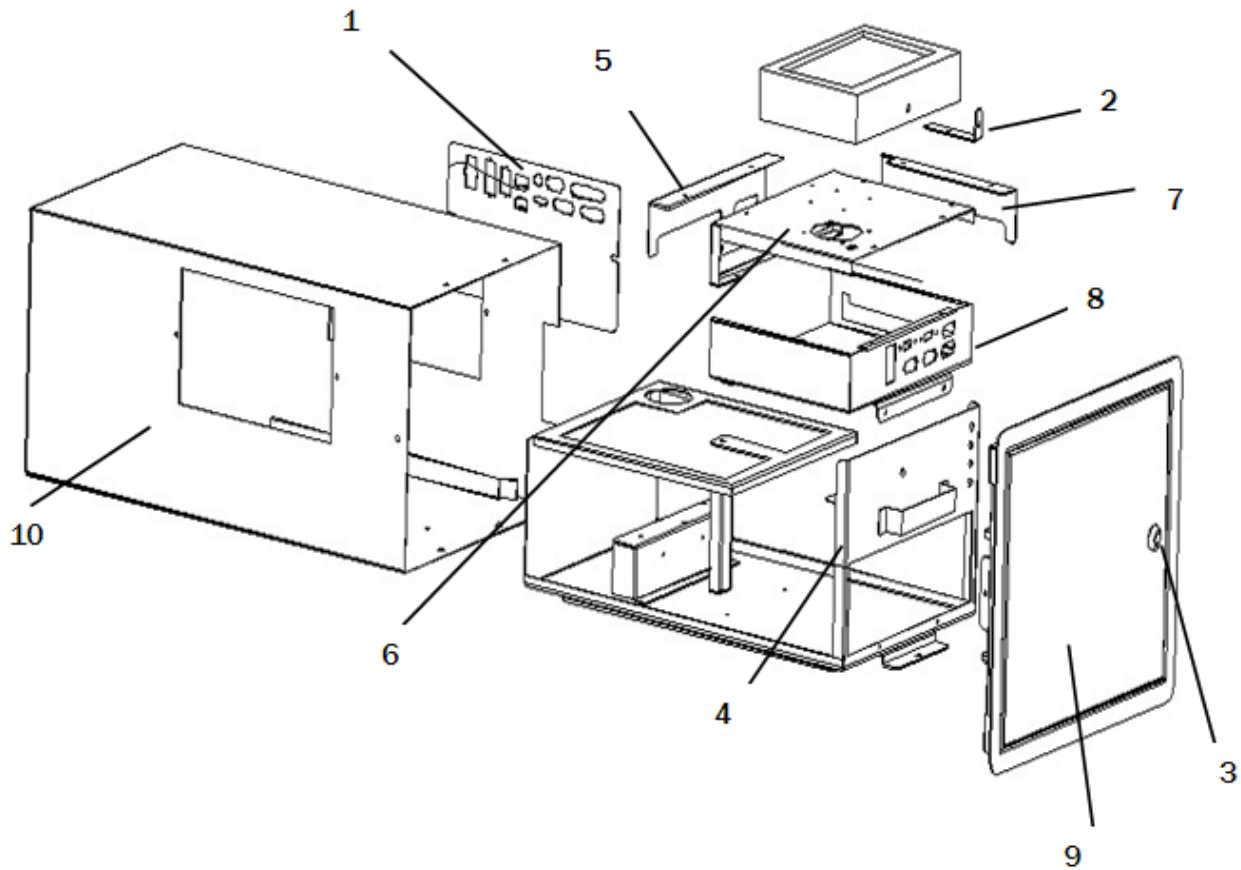
No.	Part No.	Name	Qty.
1	R106-701-000	Film decal	2
2	R106-101-000	Film bracket	1
3	R106-102-000	Camera box	1
4	R106-401-000	C582 Lock	1
5	R106-103-000	Film box bracket	1
6	R106-402-000	Camera	1
7	R106-403-000	Camera lens	1
8	R106-104-000	Camera lens plate	1
9	R106-105-000	Camera lens holder	1
10	R106-106-000	Camera lens adjuster	1
11	R106-107-000	Camera box	1
12	R106-702-000	Camera decal	2

8.3 Printer Drawer Assembly



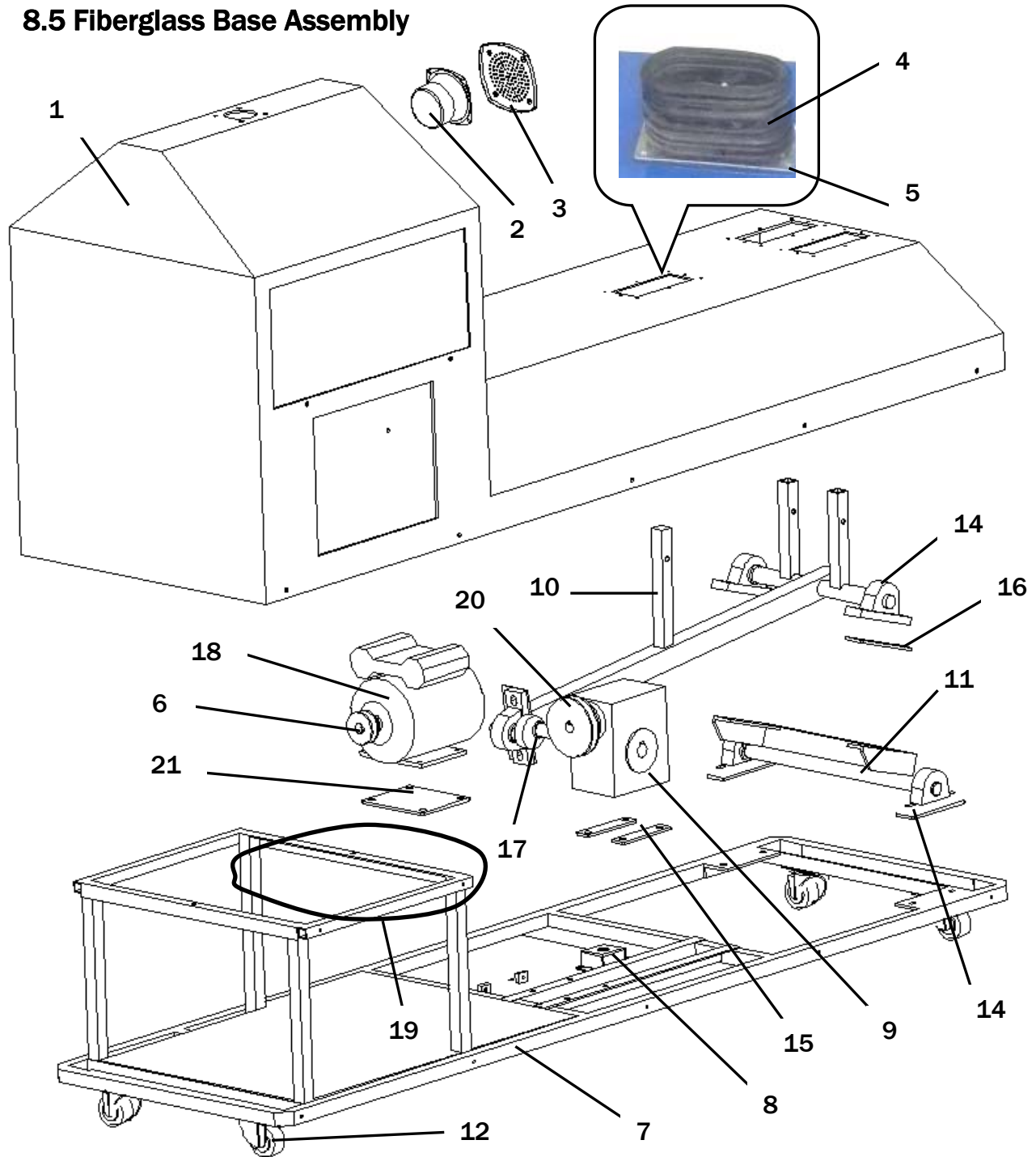
No.	Part No.	Name	Qty.
1	R106-108-000	Printer outer box	1
2	R106-404-000	Printer	1
3	R106-405-000	Lamp socket	1
4	R106-406-000	LED light-white	1
5	R106-109-000	Printer bracket	1
6	R106-110-000	Slide rail	2
7	R106-111-000	Paper access	1
8	R106-112-000	Lock pin	2
9	R106-113-000	T lock cap	1
10	R106-114-000	Printer drawer bracket	1
11	R106-407-000	Printer drawer lock	1
12	R106-115-000	Printer inner box	1

8.4 Computer Box Assembly



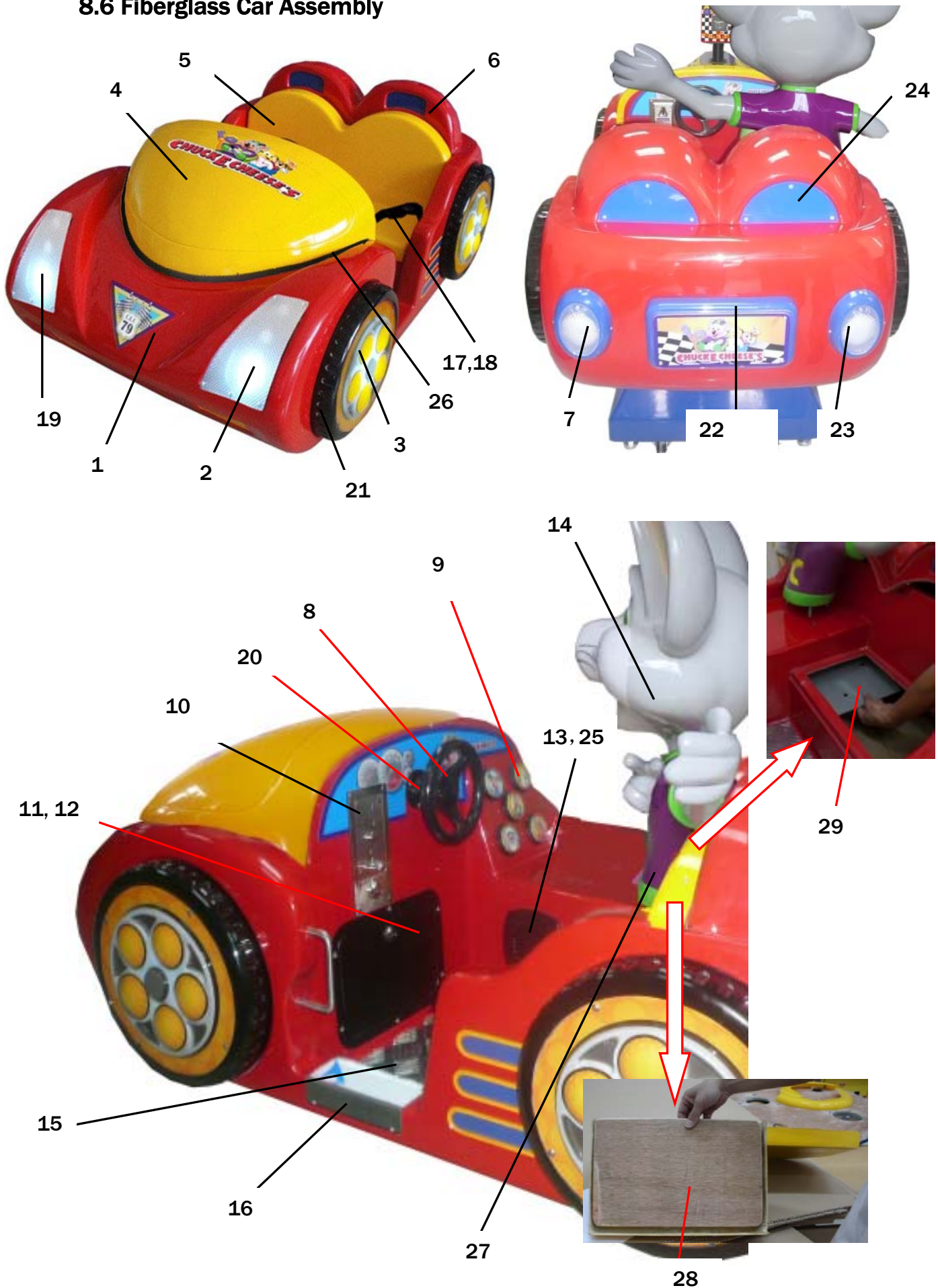
No.	Part No.	Name	Qty.
1	R106-116-000	Connector plate	1
2	R106-117-000	Monitor fixed bracket	1
3	R106-408-000	C582 lock	1
4	R106-118-000	Electrical bracket	1
5	R106-119-000	Connector baffle 2	1
6	R106-120-000	PC box cover	1
7	R106-121-000	Connector baffle 1	1
8	R106-122-000	PC box	1
9	R106-123-000	Service door	1
10	R106-124-000	Electrical outer box	1

8.5 Fiberglass Base Assembly



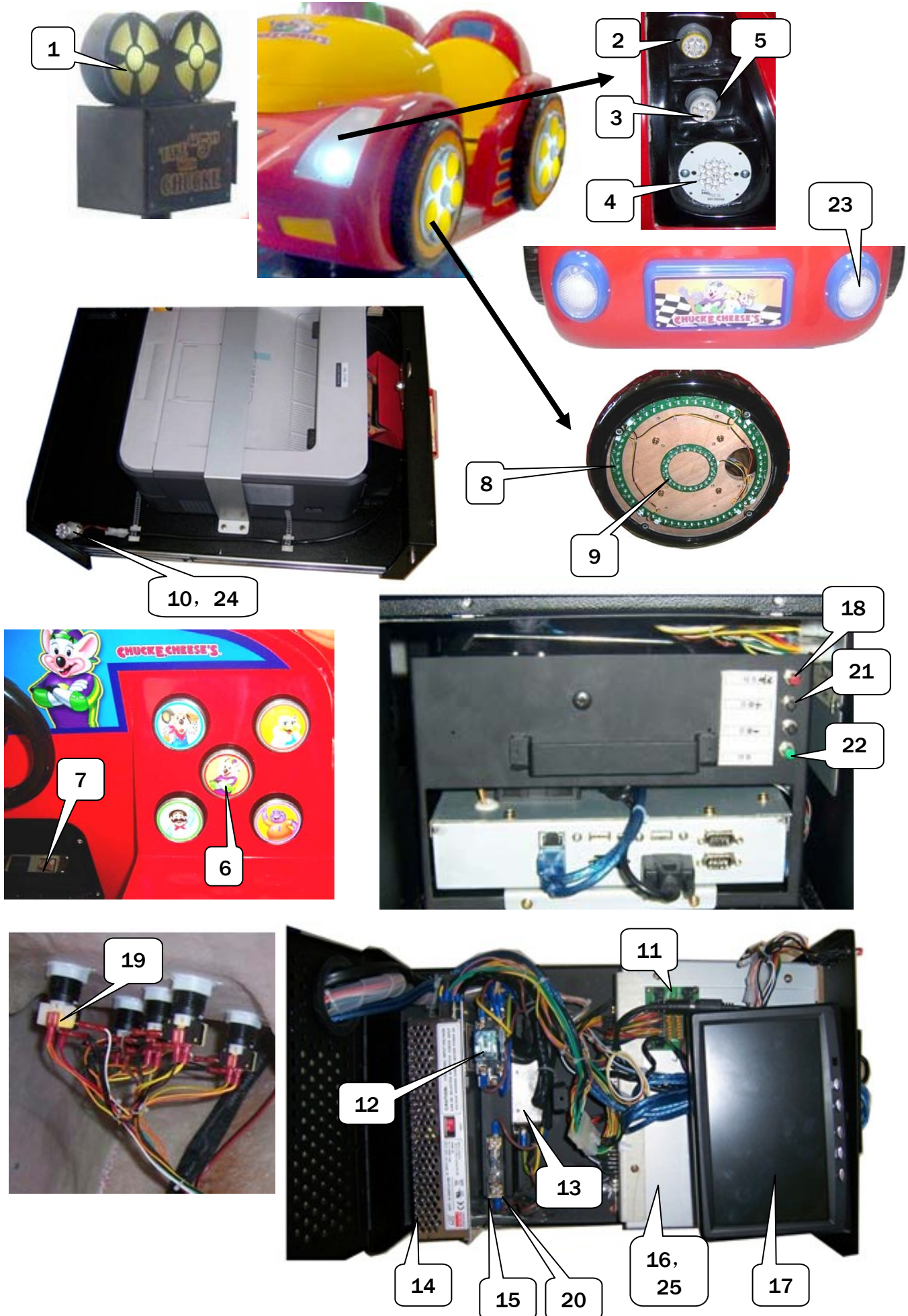
No.	Part No.	Name	Qty.
1	R106-601-000	Fiberglass base	1
2	R106-409-000	Speaker	1
3	R106-125-000	Speaker grill	1
4	R106-601-000	Protective sleeve	3
5	R106-126-000	Protective sleeve bracket	3
6	R106-410-000	Driver	1
7	R106-127-000	Main base bracket	1
8	R106-128-000	Power outlet	1
9	R106-411-000	Gear box	1
10	R106-129-000	Main motion bracket	1
11	R106-130-000	Motion bracket	1
12	R106-412-000	3" caster	4
13	R106-413-000	Leveller	6
14	R106-414-000	Spherical bearings with holder	5
15	R106-602-000	Gear box cushion	2
16	R106-603-000	Bearing cushion	2
17	R106-415-000	Crank	1
18	R106-416-000	AC motor	1
19	R106-417-000	Standard V type belt	1
20	R106-418-000	Driven	1
21	R106-604-000	Motor cushion	1

8.6 Fiberglass Car Assembly



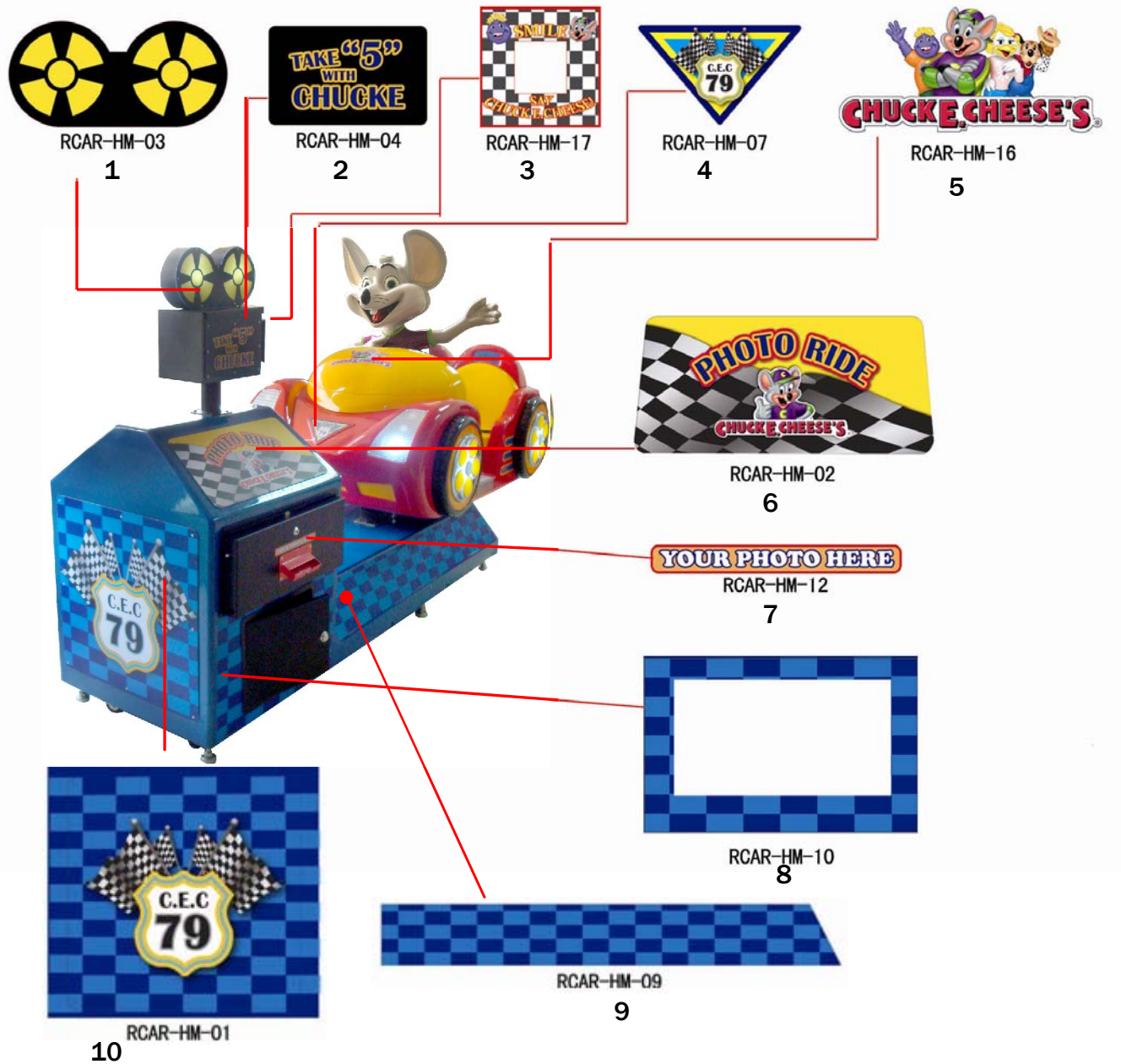
No.	Part No.	Name	Qty.
1	R106-605-000	Fiberglass car	1
2	R106-606-000	Front light cover - right	1
3	R106-607-000	Wheel vacuum form	4
4	R106-608-000	Fiberglass car cover	1
5	R106-609-000	Fiberglass seat	1
6	R106-610-000	Fiberglass back seat	1
7	R106-611-000	Tail light cover	2
8	R106-419-000	Steering wheel	1
9	R106-420-000	Button	5
10	R106-421-000	Coin mech	1
11	R106-131-000	Coin door	1
12	R106-132-000	Coin box	1
13	R106-422-000	Speaker	1
14	R106-612-000	Fiberglass character	1
15	R106-423-000	Footplate	1
16	R106-424-000	Foot pad	1
17	R106-425-000	Seat belt	1
18	R106-133-000	Seat belt bracket	2
19	R106-613-000	Front light cover – left	1
20	R106-426-000	Steering wheel shaft	1
21	R106-614-000	Fiberglass wheel	4
22	R106-615-000	Fiberglass car number plate	1
23	R106-616-000	Fiberglass tail light	2
24	R106-617-000	Back seat plate	2
25	R106-134-000	Speaker grill	1
26	R106-618-000	Fiberglass car cover rubber	1
27	R106-135-000	Fiberglass character embedded plate	1
28	R106-501-000	Reinforced plate	1
29	R106-501-000	Reinforced plate	1

8.7 Electrical Parts



No.	Part No.	Name	Qty.
1	R106-427-000	Film LED light	2
2	R106-428-000	Head LED light- yellow	2
3	R106-429-000	Head LED light- white	2
4	R106-430-000	Big head LED light- white	4
5	R106-431-000	LED light socket	4
6	R106-432-000	LED bulb	5
7	R106-433-000	Coin counter	1
8	R106-434-000	Wheel light - big	16
9	R106-435-000	Wheel light - small	4
10	R106-436-000	Head LED light- white	1
11	R106-801-000	GA1000-FUSE01.PCB	1
12	R106-437-000	Relay	1
13	R106-438-000	Filter	1
14	R106-439-000	Power supply	1
15	R106-440-000	Fuse	1
16	R106-441-000	PC	1
17	R106-442-000	Monitor	1
18	R106-443-000	Service button - red	1
19	R106-444-000	Micro SW	5
20	R106-445-000	Fuse socket	1
21	R106-446-000	Volume button - black	2
22	R106-447-000	Reset button - green	1
23	R106-448-000	Tail light	2
24	R106-449-000	LED light socket	1
25	R106-450-000	CF card	1

8.8 Decal Parts



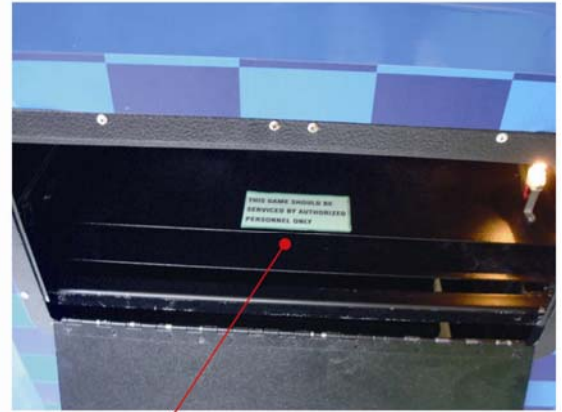
No.	Part No.	Name	Qty.
1	R106-701-000	Film decal	2
2	R106-702-000	Camera decal	2
3	R106-703-000	Camera lens decal	1
4	R106-704-000	Car triangle LOGO	1
5	R106-705-000	Car head LOGO	1
6	R106-726-000	Base top decal	2
7	R106-706-000	Photo access decal	1
8	R106-707-000	Base front left side decal	1
9	R106-708-000	Base back side decal	1
10	R106-709-000	Base front decal	1



No.	Part No.	Name	Qty.
11	R106-710-000	Control panel decal	1
12	R106-711-000	Button decal	1
13	R106-712-000	Car number decal	1
14	R106-713-000	Photo frame decal	1
15	R106-714-000	Wheel vacuum foam	4
16	R106-715-000	Base front right side decal	1
17	R106-716-000	Base back side decal	1



Service
 TY-HM-09
 18
- Volume
 TY-HM-20
 19
+ Volume
 TY-HM-20
 20
Reset
 TY-HM-06
 21



**THIS GAME SHOULD BE
 SERVICED BY AUTHORIZED
 PERSONNEL ONLY**

TY-HM-42
 22



TY-HM-19
 23

**FOR PARTS AND SERVICE
 PLEASE CONTACT
 CEC TECHNICAL SUPPORT**

TY-HM-43
 24

TY-HM-43

INDOOR MACHINE	
NAME: CHUCJE.CHEESE S/CEC	MAX POWER: 600W
MODEL: B-355	MIN POWER: 418W
S/N:	FREQUENCY: 50 / 60Hz
VOLTAGE: AC110V	DATE:
UNIVERSAL SPACE AMUSEMENT EQUIPMENT LTD.	

This device complies with Part 15 of the FCC Rules. Operation is subject to the following two conditions: (1) this device may not cause harmful interference, and (2) this device must accept any interference received, including interference that may cause undesired operation.



RCAR-HM-18
 25

No.	Part No.	Name	Qty.
18	R106-717-000	Service sticker	1
19	R106-718-000	Volume - sticker	1
20	R106-719-000	Volume + sticker	1
21	R106-720-000	Reset sticker	1
22	R106-721-000	Service information sticker 1	1
23	R106-722-000	Coin counter sticker	1
24	R106-723-000	Service information sticker 2	1
25	R106-724-000	110V nameplate without certification	1

